

1ST CHOICE EQUIPMENT EXPERTS



JET HEAT

HEATING

AIR CONDITIONING

DEHUMIDIFICATION

SOLAR HYBRID LIGHT TOWERS



1ST CHOICE EQUIPMENT EXPERTS

REIC SPECIALTY

WHO WE ARE

Private Equity – Backed By Kinderhook Industries

- An Experienced Investment Company With a Strong Track Record of Success
- Over \$5 Billion of Committed Capital

WHAT WE'RE MADE OF

- 6 Specialty Rental Brands Serving North America
- 20 Branches – 13 States and 3 Provinces
- Worldwide Intellectual Property Ownership for Jet Heat Flameless Heaters
- North American Distribution For Verdegro Solar Hybrid Light Towers
- One of the Youngest and Largest Climate Control Fleets in North America
- Over 200 Employees and growing
- Executive Team Over 150 Years Specialty Rental Equipment Experience

LOCATIONS

UNITED STATES

South Windsor, Connecticut
South Plainfield, New Jersey
Wilmington, Delaware
Chesapeake, Virginia
Fairmont, West Virginia
Marysville, Ohio
Livonia, Michigan

St. Charles, Illinois
Chaska, Minnesota
Williston, North Dakota
Denver, Colorado
Brighton, Colorado
Edmond, Oklahoma
Lakewood, Washington
Midland-Odessa, Texas

CANADA

Brantford, Ontario
Red Deer, Alberta
Fort McMurray, Alberta
Fort St. John, British Columbia
Anzac, Alberta
Sudbury, Ontario
Kitimat, British Columbia





1ST CHOICE EQUIPMENT EXPERTS



REIC SPECIALTY.COM



RENTAL DESICCANT DEHUMIDIFIERS

Feature Units. Full product offering available upon request.

SPECIFICATIONS

**2,250
CFM DH**



CFM (Process)	2,250
Static Pressure	2"
Voltage / Phase / Hertz	480/3/60
Full Load Amps	52
Weight	1,250
L x W x H	89" x 29" x 58"

**4,500
CFM DH**



CFM (Process)	4,500
Static Pressure	4"
Voltage / Phase / Hertz	480/3/60
Full Load Amps	108
Weight	1,950
L x W x H	98" x 46" x 77"

**5,000
CFM DH**



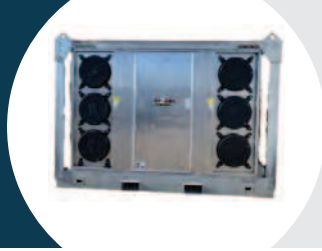
CFM (Process)	5,000
Static Pressure	5"
Voltage / Phase / Hertz	480/3/60
Full Load Amps	148
Weight	4,400
L x W x H	101" x 50" x 96"

**7,500
CFM DH**



CFM (Process)	7,500
Static Pressure	5"
Voltage / Phase / Hertz	480/3/60
Full Load Amps	178
Weight	4,400
L x W x H	101" x 50" x 96"

**15,000
CFM DH**



CFM (Process)	15,000
Static Pressure	6"
Voltage / Phase / Hertz	480/3/60
Full Load Amps	345
Weight	9,500
L x W x H	140" x 100" x 101"

Some dual-fuel units available that operate on gas and/or electric.



1ST CHOICE EQUIPMENT EXPERTS



REIC SPECIALTY

REICSPECIALTY.COM | INFO@REICSPECIALTY.COM